



# GMT MONTHLY MEMBERSHIP PROGRESS REPORT

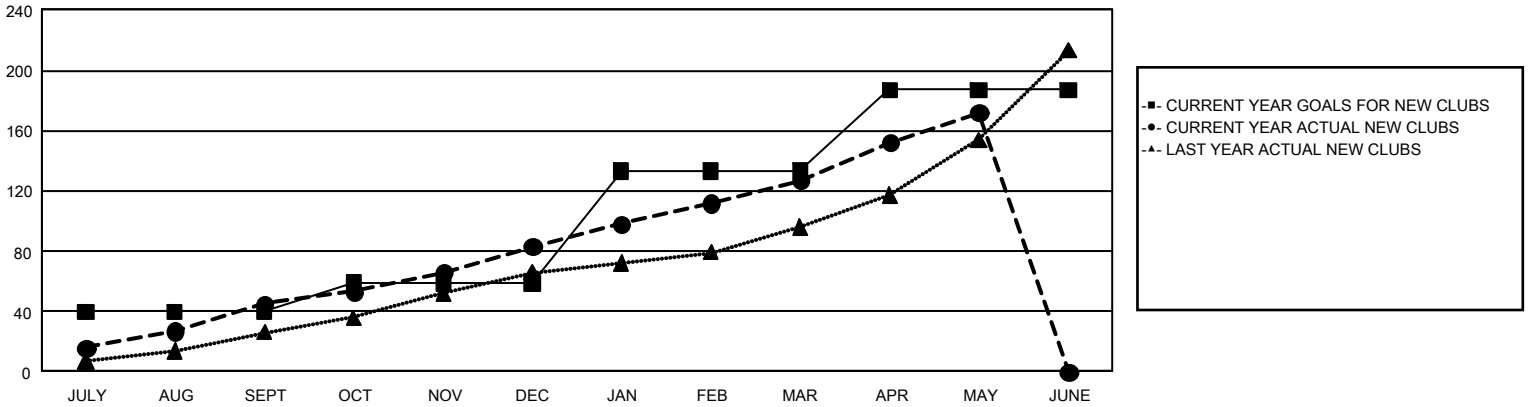
## GAT Constitutional Area 3

Results as of: 5/31/2026

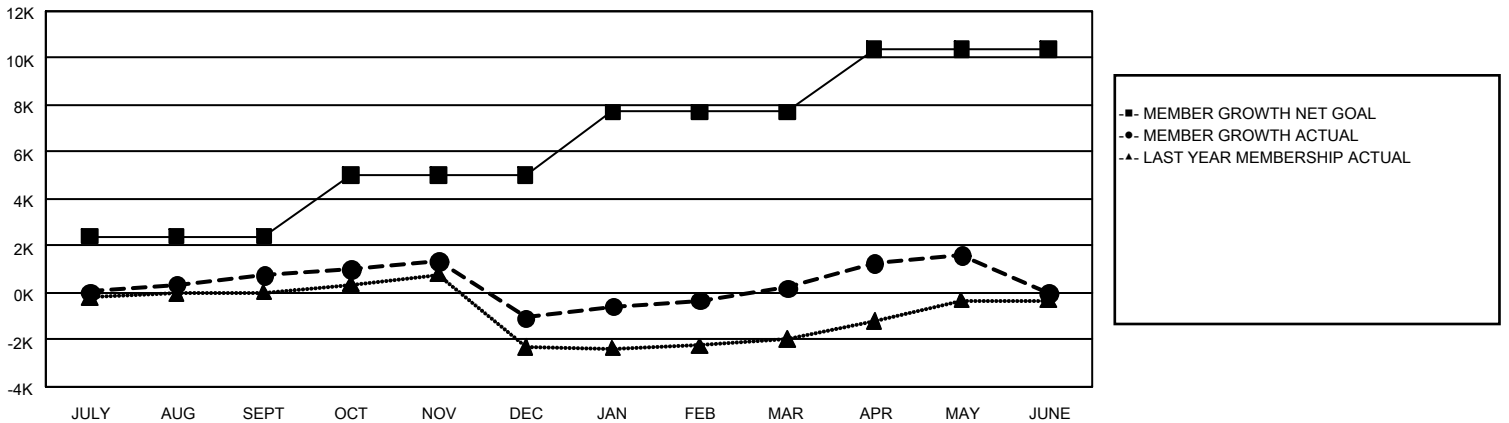
REPORT DOES NOT INCLUDE CLUBS IN UNDISTRICTED AREAS.

Clubs				Members			
RESULTS FOR 2025-2026				RESULTS FOR 2025-2026			
QUARTER	NEW CLUB GOAL	NEW CLUBS	DROPPED CLUBS	QUARTER	MEMBER GROWTH NET GOAL	MEMBER GROWTH ACTUAL	DROPPED MEMBERS ACTUAL (including transfers)
JULY/AUG/SEPT	40	45	29	JULY/AUG/SEPT	2,394	4,068	2,887
OCT/NOV/DEC	19	38	53	OCT/NOV/DEC	2,611	3,929	5,425
JAN/FEB/MAR	74	44	10	JAN/FEB/MAR	2,708	3,387	1,809
APR/MAY/JUNE	54	45	7	APR/MAY/JUNE	2,654	3,586	1,949

**GOALS AND ACTUAL NEW CLUBS CUMULATIVE**



**GOALS AND ACTUAL MEMBERS CUMULATIVE**



<b>DROPPED CLUBS: 99</b>	2,399 CLUBS OF 4,496 ADDED 1 OR MORE NEW MEMBERS	<b><u>GENDER DISTRIBUTION</u></b> MALE                      48,950 (45.71%) FEMALE                    58,072 (54.23%)
<b><u>DROPPED MEMBERS</u></b> DECEASED                      650 CLUB CANCELLED                876 OTHER                              10,443 <hr/> TOTAL                              11,969	<a href="#">CLICK HERE FOR CUMULATIVE MEMBERSHIP DATA</a>	TOTAL FAMILY UNIT MEMBERS                      37,014  FAMILY MEMBERS PAYING HALF DUES                      20,385